



MULTIFUNCTION DOZER BLADE LTDL

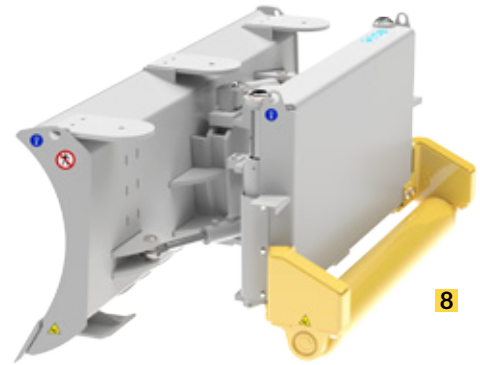
TECHNICAL SPECIFICATIONS

- 1 3 plates to fix laser signal receivers support poles
- 2 Proportional electro-hydraulic controlvalve
- 3 Back plate with vertical hydraulic cylinder

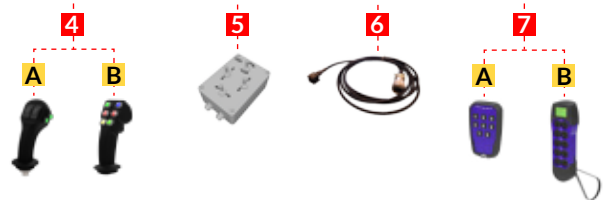


DESCRIPTION

Tiltadozer Multifunction blade ideal for carrying out **multiple types of work**: dozing, backfilling and leveling. Complete by 3 double-acting hydraulic cylinders for the left-right anglulation and oscillation (TILT) and one applied to a **rear back plate for vertical movement up-down** of the entire blade. This feature, combined with the standard equipment of an electro-hydraulic controlvalve, **allows to automate with a laser self-levelling system the whole blade without having to use the control valve of the host machine.**



CONTROLS



| MODELS | | LTDL 2100 | LTDL 2400 | LTDL 2700 |
|-------------------------------------|------|-----------|-----------|-----------|
| Blade width | mm | 2100 | 2400 | 2700 |
| Working width at maximum angulation | mm | 1970 | 2250 | 2530 |
| Blade maximum angulation (rotation) | ° | ± 20 | ± 20 | ± 20 |
| Blade maximum tilt | ° | ± 15 | ± 15 | ± 15 |
| Vertical movement | mm | 300 | 300 | 300 |
| Weight without linkage | Kg | 755 | 785 | 815 |
| Blade height | mm | 710 | 710 | 710 |
| | Tons | 3,5÷8 | 4÷10 | 6÷15 |

CONTROLS

- 4** Joystick
 - A** On/off joystick
 - B** Proportional joystick
- 5** 4 levers manipulator (on/off)
- 6** 14 pins connector
- 7** Radio remote control
 - A** On/off radio remote control
 - B** Proportional radio remote control

OPTIONS

- 8** Bolted back roller kit

LINKAGE SYSTEMS

- Universal linkage for Skid-Steer Loader**
- Non universal linkage for Skid-Steer Loader**
- Wheel Loaders, Backhoe Loaders and Telehandlers linkage**

APPLICATIONS

- INDUSTRIAL SECTOR
- BUILDING SECTOR
- ROAD MAINTENANCE
- COMPOSTING PLANTS
- LEVELLING OPERATIONS EXTERNAL AND INTERNAL AREAS
- EARTH DOZING, MOVEMENT AND BACKFILLING OPERATIONS

