



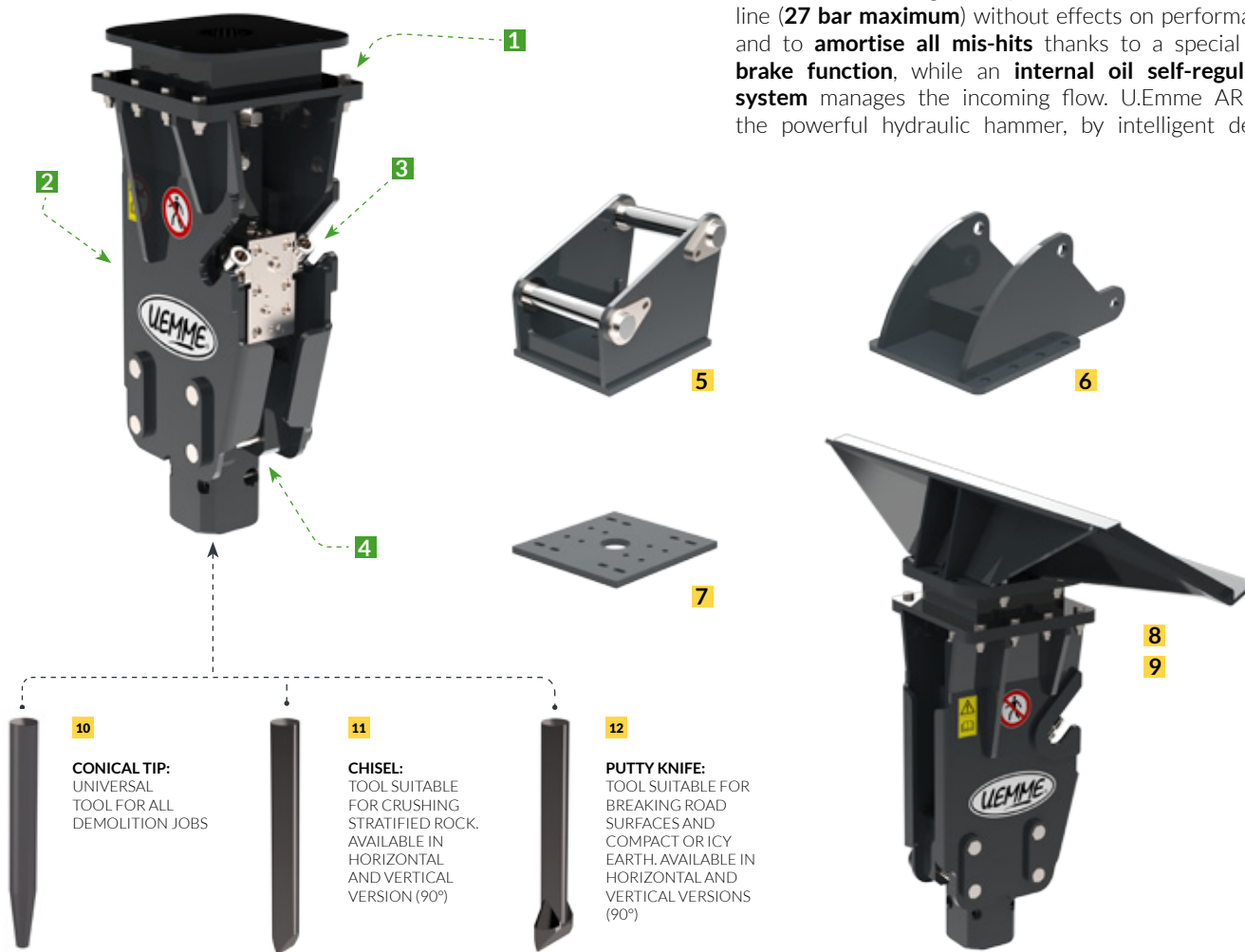
HAMMER ARIETE

TECHNICAL SPECIFICATIONS

- 1 Set up for bolted linkage systems
- 2 Heavy duty carter with anti-vibration foam strips
- 3 Easy to access control valve with internal oil self-regulating system
- 4 Self-bracking function able to amortise all mis-hits

DESCRIPTION

Hydraulic hammers ARIETE gets an **energy recovery system** providing more power than conventional membrane hammers, as **it uses the gas pressure in the hammer head** and therefore is independent from the auxiliary hydraulic line of the host machine. In fact the oil needed is only in the first part of the cylinder charging and after which intervenes the gas ensuring precise and powerful shots by **acting like a spring**. Each ARIETE hammer is able to work with high back pressure values on the return line (**27 bar maximum**) without effects on performances and to **amortise all mis-hits** thanks to a special **self-brake function**, while an **internal oil self-regulating system** manages the incoming flow. UEmme ARIETE: the powerful hydraulic hammer, by intelligent design.



10
CONICAL TIP:
 UNIVERSAL
 TOOL FOR ALL
 DEMOLITION JOBS

11
CHISEL:
 TOOL SUITABLE
 FOR CRUSHING
 STRATIFIED ROCK.
 AVAILABLE IN
 HORIZONTAL
 AND VERTICAL
 VERSION (90°)

12
PUTTY KNIFE:
 TOOL SUITABLE FOR
 BREAKING ROAD
 SURFACES AND
 COMPACT OR ICY
 EARTH. AVAILABLE IN
 HORIZONTAL AND
 VERTICAL VERSIONS
 (90°)

MODELS		ARIETE 60	ARIETE 90	ARIETE 150	ARIETE 200	ARIETE 250	ARIETE 300	ARIETE 400
Hit energy	J	152	270	330	450	755	800	855
Weight without linkage and tool	Kg	60	100	150	200	250	310	400
Tool's diameter	Ø/mm	36	45	50	57	65	70	80
Min-max oil flow	l/1'	9-18	20-25	27-30	30-45	33-55	60-90	60-110
Min-max pressure	bar	80-100	90-110	95-120	120-140	130-145	130-145	140-150
	Tons	0,5÷1	1÷2	2÷3	3÷4,5	4,5÷6	6÷8	7÷9
	Tons	-	-	2,5÷3,5	3,5÷4,5	-	-	-
	Tons	-	-	-	4,5÷6	6÷7,5	7,5÷8,5	8,5

LINKAGE SYSTEMS

- 5** Standard bolted plate
- 6** Bolted plate for Backhoe Loaders' arm
- 7** Naked plate for quick couplers
- 8** Coupling plate for universal linkage Skid-Steer Loaders
- 9** Coupling plate for non universal linkage Skid-Steer Loaders

TOOLS

- 10** Conical tips
- 11** Horizontal or vertical chisels
- 12** Horizontal or vertical putty knives

APPLICATIONS

- DEMOLITION
- RECYCLING
- CRUSHING
- TRENCHING
- DIGGING AND MUCKING IN TUNNELING, CAVING AND MINING
- CONSOLIDATION AND INJECTION OPERATIONS IN BUILDING
- ROAD MAINTENANCE
- SEWER MAINTENANCE

